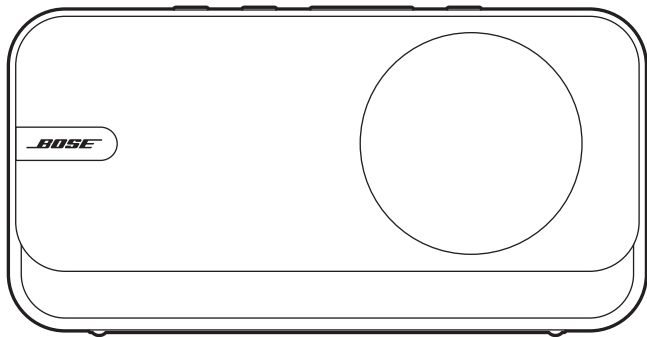
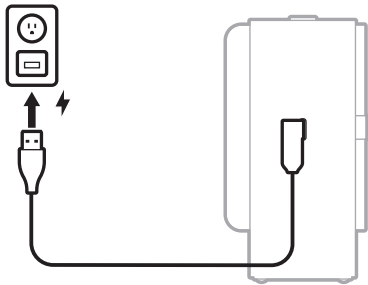


BOSE

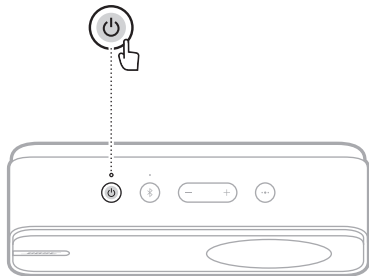


SOUNDLINK HOME *BLUETOOTH*[®] SPEAKER

1



2



3

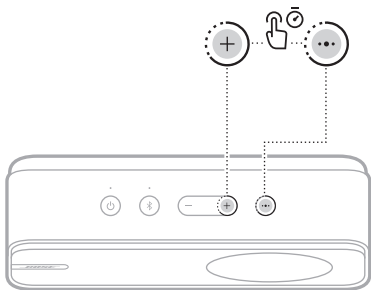


support.Bose.com/si-home

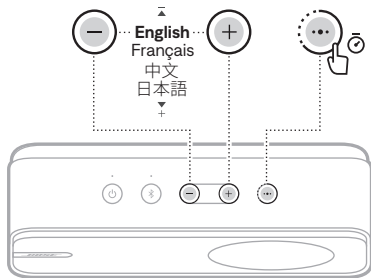


Change the language | Choix de la langue | 更改语言 | 言語を変更する

1



2



3

Please read and keep all safety and use instructions.

Refer to the owner's guide for more information about your Bose SoundLink Home *Bluetooth* Speaker (including accessories and replacement parts) at support.Bose.com/sl-home or contact Bose customer service for a printed copy.

Important Safety Instructions

Do not use this apparatus near water.

Clean only with a dry cloth.

Only use attachments/accessories specified by the manufacturer.

Refer all servicing to qualified personnel. Servicing is required when the apparatus has been damaged in any way, such as power-supply cord or plug is damaged, liquid has been spilled or objects have fallen into the apparatus, the apparatus has been exposed to rain or moisture, does not operate normally, or has been dropped.

WARNINGS/CAUTIONS



This product contains magnetic material. Consult your physician on whether this might affect your implantable medical device.

- Keep the product away from fire and heat sources. Do NOT place naked flame sources, such as lighted candles, on or near the product.
- Do NOT make unauthorized alterations to this product.
- Use this product only with an agency-approved LPS power supply that meets local regulatory requirements (e.g., UL, CSA, VDE, CCC).

- The battery provided with this product may present a risk of fire, explosion or chemical burn if mishandled, incorrectly replaced or replaced with an incorrect type.
- Do not expose products containing batteries to excessive heat (e.g. from storage in direct sunlight, fire or the like).
- Due to ventilation requirements, Bose does not recommend placing the product in a confined space such as in a wall cavity or in an enclosed cabinet.
- Do not place or install near any heat sources, such as fireplaces, radiators, heat registers, stoves or other apparatus (including amplifiers) that produce heat.

Regulatory and Legal Information

NOTE: This equipment has been tested and found to comply with the limits for a Class B digital device, pursuant to Part 15 of the FCC Rules. These limits are designed to provide reasonable protection against harmful interference in a residential installation. This equipment generates, uses, and can radiate radio frequency energy and, if not installed and used in accordance with the instructions, may cause harmful interference to radio communications. However, there is no guarantee that interference will not occur in a particular installation. If this equipment does cause harmful interference to radio or television reception, which can be determined by turning the equipment off and on, the user is encouraged to try to correct the interference by one or more of the following measures:

- Reorient or relocate the receiving product or antenna.
- Increase the separation between the equipment and receiver.
- Connect the equipment into an outlet on a circuit different from that to which the receiver is connected.
- Consult the dealer or an experienced radio/TV technician for help.

Changes or modifications not expressly approved by Bose Corporation could void the user's authority to operate this equipment.

This device complies with part 15 of the FCC Rules and with ISED Canada license-exempt RSS standard(s). Operation is subject to the following two conditions: (1) This device may not cause harmful interference, and (2) this device must accept any interference received, including interference that may cause undesired operation.

This equipment should be installed and operated with a minimum distance of 20 cm between radiator and your body.

CAN ICES-3(B)/NMB-3(B)



Li-ion

Date of Manufacture: The eighth digit in the serial number indicates the year of manufacture; "4" is 2014 or 2024.

Importers: Bose Electronics (Shanghai) Company Limited, Level 6, Tower D, No. 2337 Gudai Rd. Minhang District, Shanghai 201100

Model: 443696. The CMIIT ID is located on the bottom of the speaker.

The **Bose Terms of Use** apply to this product: worldwide.bose.com/termsofuse

This product is covered by a limited warranty from Bose, available at worldwide.Bose.com/Warranty

The *Bluetooth*® word mark and logos are registered trademarks owned by *Bluetooth* SIG, Inc. and any use of such marks by Bose Corporation is under license.

USB Type-C® and USB-C® are registered trademarks of USB Implementers Forum.

Bose, the B logo, and SoundLink are trademarks of Bose Corporation. | Bose Corporation Headquarters: 1-877-230-5639 | ©2024 Bose Corporation. No part of this work may be reproduced, modified, distributed, or otherwise used without prior written permission.

Please complete and retain for your records

The serial number and model number are located on the bottom of the speaker.

Serial number: _____

Model number: 443696

Please keep your receipt. Now is a good time to register your Bose product. You can easily do this by going to [worldwide.bose.com/ProductRegistration](https://www.worldwide.bose.com/ProductRegistration)

FRANÇAIS

Lisez toutes les consignes de sécurité et les instructions d'utilisation.

Reportez-vous à la notice d'utilisation pour plus d'informations sur votre enceinte *Bluetooth* Bose Soundlink Home (notamment sur les accessoires et pièces de rechange) à l'adresse support.bose.com/sl-home ou contactez le service client de Bose pour obtenir une copie imprimée.

Instructions importantes relatives à la sécurité

N'utilisez pas cet appareil à proximité de feu.

Utilisez uniquement un chiffon sec pour le nettoyage.

Utilisez uniquement les accessoires spécifiés par le fabricant.

Confiez toute réparation à du personnel qualifié. Une réparation est nécessaire lorsque l'appareil a été endommagé de quelque façon que ce soit (endommagement du câble d'alimentation ou de la fiche électrique, renversement d'un

liquide ou de tout objet sur l'appareil, exposition de l'appareil à la pluie ou à l'humidité, dysfonctionnement, chute de l'appareil, etc.).

AVERTISSEMENTS/PRÉCAUTIONS



Ce produit contient des composants magnétiques. Consultez votre médecin pour savoir si ces composants peuvent avoir une incidence sur votre dispositif médical implantable.

- Conservez le produit à l'écart du feu et des sources de chaleur. Veillez à NE PAS placer d'objets enflammés, tels que des bougies allumées, sur l'appareil ou à proximité.
- Veillez à NE PAS apporter de modifications non autorisées à ce produit.
- Utilisez ce produit uniquement avec un adaptateur secteur LPS certifié conforme aux réglementations en vigueur (p. ex., UL, CSA, VDE, CCC).
- La batterie/pile fournie avec ce produit peut provoquer un incendie, une explosion ou une brûlure chimique si elle n'est pas correctement manipulée ou remplacée, ou si elle est remplacée par un type de batterie/pile non adapté.
- N'exposez pas les produits contenant des piles ou des batteries à une chaleur excessive (ne les placez pas à la lumière directe du soleil, près d'un feu ou de toute autre source de chaleur).
- Pour assurer une ventilation correcte, Bose déconseille de placer ce produit dans un espace confiné, notamment une cavité murale ou un placard fermé.
- Veillez à ne pas placer ou installer cet appareil à proximité d'une quelconque source de chaleur, telle qu'une cheminée, un radiateur, une arrivée d'air chaud, un four ou tout autre appareil (notamment des amplificateurs) produisant de la chaleur.

Informations réglementaires et juridiques

REMARQUE : cet appareil a fait l'objet de tests prouvant sa conformité aux limites imposées aux appareils numériques de classe B, conformément à la partie 15 de la réglementation de la FCC. Ces limites sont conçues pour fournir une protection raisonnable contre les interférences nuisibles dans une installation résidentielle. Cet équipement génère, utilise et peut émettre des fréquences radio et, s'il n'est pas installé et utilisé conformément aux instructions, risque de provoquer des interférences nuisibles aux communications radio. Cependant, rien ne permet de déterminer le moment où ces interférences peuvent se produire dans une installation particulière. Si cet appareil provoque des interférences avec la radio ou la télévision, ce qui peut être déterminé en éteignant et en allumant l'équipement, l'utilisateur est encouragé à corriger ces interférences en prenant une ou plusieurs des mesures suivantes :

- Réorienter ou déplacer le récepteur ou l'antenne.
- Augmenter la distance entre l'équipement et le récepteur.
- Brancher l'équipement sur une prise de courant située sur un circuit différent de celui utilisé pour le récepteur.
- Consulter le revendeur ou un technicien radio/TV expérimenté pour obtenir de l'aide.

Les changements ou modifications non expressément approuvés par Bose Corporation peuvent annuler le droit de l'utilisateur à utiliser cet équipement.

Cet appareil est conforme à la partie 15 de la réglementation de la FCC et à ou aux standards RSS exemptés de licence du ministère de l'Innovation, des Sciences et du Développement économique (ISDE) du Canada. Son utilisation est soumise aux deux conditions suivantes : (1) il ne doit pas provoquer d'interférences et (2) il doit tolérer les interférences externes, y compris celles susceptibles de provoquer un dysfonctionnement.

Cet appareil doit être installé et utilisé en respectant une distance minimale de 20 cm entre l'élément rayonnant et votre corps.

CAN ICES-3(B)/NMB-3(B)



Date de fabrication : le huitième chiffre du numéro de série indique l'année de fabrication ; par exemple, « 4 » correspond à 2014 ou à 2024.

Importateurs : Bose Electronics (Shanghai) Company Limited, Level 6, Tower D, No. 2337 Gudai Rd. Minhang District, Shanghai 201100

Modèle : 443696. L'ID CMIIT se trouve sous l'enceinte.

Les **Conditions d'utilisation de Bose** s'appliquent à ce produit : sur la page worldwide.bose.com/termsfuse

ce produit est couvert par une garantie limitée de Bose, disponible sur la page worldwide.bose.com/Warranty

L'appellation et les logos **Bluetooth®** sont des marques déposées de **Bluetooth SIG, Inc.**, utilisées sous licence par Bose Corporation.

USB Type-C® et USB-C® sont des marques déposées de USB Implementers Forum.

Bose, le logo B et SoundLink sont des marques de commerce de Bose Corporation. | Siège de Bose Corporation : 1-877-230-5639 | ©2024 Bose Corporation. Toute reproduction, modification, distribution ou autre utilisation, même partielle, de ce document est interdite sans autorisation écrite préalable.

Renseignements à noter et conserver

Le numéro de série et le numéro de modèle se trouvent sous l'enceinte.

Numéro de série : _____

Numéro de modèle : 443696

Conservez votre reçu. Enregistrez dès maintenant votre produit Bose. Pour ce faire, rendez-vous sur worldwide.bose.com/ProductRegistration

简体中文

请阅读并保留所有安全和使用说明。

有关 Bose SoundLink Home Bluetooth 扬声器 (包括附件和替换件) 的更多信息, 请参阅 support.bose.com/sl-home 上的用户指南或联系 Bose 客户服务处以获取纸质副本。

重要安全说明

请勿在水边使用此设备。

请仅用干布进行清洁。

只能使用制造商指定的附件/配件。

任何维修事宜均请向合格的人员咨询。如果设备有任何损坏, 均需进行维修, 例如电源线或插头受损、液体溅入或物体落入设备内、设备受雨淋或受潮、不能正常工作或跌落。

警告/小心



本产品含有磁性材料。关于是否会影响可植入医疗设备的情况, 请咨询医生。

- 请勿将本产品放置到远离火源和热源的地方。请勿将明火火源 (如点燃的蜡烛) 置于本产品上或靠近本产品。
- 请勿对本产品进行未经授权的修改。

- 仅将本产品搭配经过相关部门批准且符合本地监管要求 (如 UL、CSA、VDE、CCC) 的 LPS 电源使用。
- 此产品随附的电池如果处理不当、更换不当或更换为不正确的类型, 可能存在起火、爆炸或化学灼伤危险。
- 请勿使含有电池的 product 过热 (例如, 请避免阳光直射并远离火源等)。
- 由于有通风需求, Bose 不推荐将本产品放置在有限的空间中, 比如墙洞或封闭式橱柜。
- 请勿放置或安装在任何热源旁, 例如壁炉、暖气片、热调节装置、火炉或可产生热量的其他设备 (包括扩音器)。

监管和法律信息

注意 : 本设备已经过测试, 符合 FCC 规则第 15 部分有关 B 类数字设备的各项限制。这些限制旨在为住宅安装提供合理的保护, 防止有害干扰。本设备会产生、使用和辐射射频能量, 如果不按照说明进行安装和使用, 可能会对无线电通信造成有害干扰。但是, 不能保证在特定安装环境中不会产生干扰。如果本设备确实对无线电或电视接收造成有害干扰 (可通过关闭和打开设备来确定), 建议用户尝试采取以下一项或多项措施来消除干扰:

- 调整接收产品或天线的方向或位置。
- 增加设备与接收器之间的距离。
- 将设备连接到与接收器所连接电路不同的插座上。
- 向经销商或有经验的无线电/电视技术人员寻求帮助。

未经 Bose 公司明确批准的更改或修改可能导致用户无权操作本产品。

本产品符合 FCC 规则第 15 部分规定和加拿大 ISED 免许可证 RSS 标准。操作须满足以下两个条件: (1) 本设备不会造成有害干扰; (2) 本设备必须承受任何接收到的干扰, 包括可能造成设备异常工作的干扰。

您在安装和操作本设备时，身体应距离辐射体至少 20 厘米。

CAN ICES-3(B)/NMB-3(B)



Li-ion

生产日期：序列号中第八位数字表示生产年份；“4”表示 2014 年或 2024 年。

进口商：博士视听系统（上海）有限公司，上海市闵行区古浪路 2337 号 D 座 6 层，201100

型号：443696。CMIIT ID 位于扬声器底部。

可在 worldwide.bose.com/termsfuse 查看适用于此产品的 **Bose 使用条款**

本产品由 Bose 提供有限质保，可查看：
worldwide.bose.com/Warranty

Bluetooth® 文字标记和徽标是由 Bluetooth SIG, Inc. 所拥有的注册商标，Bose Corporation 根据许可规定使用上述标记。

USB Type-C® 和 USB-C® 是 USB 应用者论坛的注册商标。Bose、B 徽标和 SoundLink 是 Bose Corporation 的商标。| Bose Corporation 总部：1-877-230-5639 | ©2024 Bose Corporation。未经事先书面许可，不得复制、修改、发行或以其他方式使用本资料的任何部分。

请填写以下内容，留作记录

序列号和型号位于扬声器底部。

序列号：_____

型号：443696

请保留您的收据。现在是您注册 Bose 产品的好机会。您可以访问 worldwide.bose.com/ProductRegistration 轻松完成此操作。

有毒或有害物质或元素的名称及成分

零件名称	有毒或有害物质和元素					
	铅 (Pb)	汞 (Hg)	镉 (Cd)	六价铬 (Cr(VI))	多溴化联苯 (PBB)	多溴二苯醚 (PBDE)
印刷电路板	X	0	0	0	0	0
金属零件	X	0	0	0	0	0
塑料零件	0	0	0	0	0	0
扬声器	X	0	0	0	0	0
连接线	X	0	0	0	0	0

此表格符合 SJ/T 11364 条款。
0: 表示此零件使用的同类物质中包含的有毒或有害物质低于 GB/T 26572 中的限定要求。
X: 表示此零件使用的同类物质中至少有一种包含的有毒或有害物质高于 GB/T 26572 中的限定要求。



日本語

安全上の留意項目および使用方法をよく読み、それに従ってください。

Bose SoundLink Home Bluetooth スピーカーに関する詳細情報や、アクセサリーにつきましては、support.bose.com/sl-home から取扱説明書をご参照ください。取扱説明書の印刷物をご希望の場合は、Bose カスタマーサービスまでご連絡ください。

安全上の留意項目

この製品を水の近くで使用しないでください。
お手入れは乾いた布を使用して行ってください。
必ず指定された付属品、あるいはアクセサリのみをご使用ください。

修理が必要な際には、Bose カスタマーサービスにお問い合わせください。製品に何らかの損傷が生じた場合、たとえば電源コードやプラグの損傷、液体や物の内部への侵入、雨や湿気などによる水濡れ、動作の異常、製品本体の落下などの際には、直ちに電源プラグを抜き、修理をご依頼ください。

警告/注意



この製品には磁性材料が含まれています。体内に埋め込まれている医療機器への影響については、医師にご相談ください。

- ・火気や熱源などの近くで使用しないでください。火の付いたろうそくなどの火気を、製品の上や近くに置かないでください。
- ・許可なく製品を改造しないでください。
- ・この製品には、法令(JUL、CSA、VDE、CCCなど)に準拠したLPS電源アダプターのみをお使いください。
- ・本製品に付属の電池/バッテリーは、取り扱いを誤ったり、正しく交換しなかったり、誤ったタイプの電池/バッテリーと交換したりすると、火災や爆発、化学やけどなどの原因になる恐れがあります。
- ・電池/バッテリーが含まれる製品を直射日光や炎など、過度な熱にさらさないでください。
- ・空気の流れが妨げられる恐れがあるため、本製品を壁のくぼみや密閉された家具の中には置かないでください。
- ・暖炉、ラジエーター、暖房送風口、ストーブ、その他の熱を発する装置(アンプを含む)の近くには設置しないでください。

規制および法的情報

注: 本機は、FCC規則のパート15に定められたクラスBデジタル装置の規制要件に基づいて所定の試験が実施され、これに準拠することが確認されています。この規制要件は、住宅に設置した際の有害な干渉に対し、合理的な保護となるように策定されています。本機は無線周波数エネルギーを発生、利用、また放射することがありますので、指示どおりに設置および使用されない場合は、無線通信に有害な電波干渉を引き起こす可能性があります。しかし、特定の設置条件で干渉が発生しないことを保証するものではありません。本機が、電源のオン・オフによりラジオ・テレビ受信に有害な干渉を引き起こしていることと確認された場合、次の1つあるいはいくつかの方法で対処を試みることをおすすめします。

- ・受信機やアンテナの向きや位置を変える。
- ・機器と受信機の間隔を広げる。
- ・受信機の接続されているコンセントとは別の回路のコンセントに本機を接続する。
- ・販売店もしくは経験豊富なラジオ・テレビ技術者に相談する。

Bose Corporationによって明確な許諾を受けていない本製品への変更や改造を行うと、この機器を使用するユーザーの権利が有効になります。

このデバイスは、FCC規則のパート15およびカナダイノベーション・科学経済開発省のライセンス適用免除RSS規則に準拠しています。動作は次の2つの条件に従う必要があります:(1)本装置は有害な干渉を引き起こしません。(2)本装置は、不適切な動作を招く可能性がある干渉を含め、いかなる干渉も対応できなければなりません。

本機は、ラジエーターと身体との間を20 cm以上離して設置して動作させる必要があります。

CAN ICES-3(B)/NMB-3(B)



Li-ion

製造日: シリアル番号の8桁目の数字は製造年を表します。「4」は2014年または2024年です。

輸入元: Bose Electronics (Shanghai) Company Limited, Level 6, Tower D, No. 2337 Gudai Rd. Minhang District, Shanghai 201100

モデル: 443696。CMIIT IDはスピーカーの底面にあります。

この製品には**Boseの利用条件**が適用されます:
worldwide.bose.com/termsofuse

製品保証の詳細はworldwide.bose.com/Warrantyをご覧ください。

Bluetooth®のワードマークとロゴは、Bluetooth SIG, Inc.が所有する登録商標で、Bose Corporationはこれらの商標を使用する許可を受けています。

USB Type-C®およびUSB-C®は、USB Implementers Forumの登録商標です。

Bose、Bのロゴ、およびSoundLinkは、Bose Corporationの商標です。| Bose Corporation Headquarters: 1-877-230-5639 | ©2024 Bose Corporation. 本書のいかなる部分も、書面による事前の許可のない複写、変更、配布、その他の使用は許可されません。

製品情報の控え

シリアル番号とモデル番号は、スピーカーの底面に記載されています。

シリアル番号: _____

モデル番号: 443696

ご購入時の領収書を保管することをおすすめします。製品の登録をお願いいたします。登録は弊社Webサイト(worldwide.bose.com/ProductRegistration)から簡単に行えます。

License Disclosures

The following license disclosures apply to certain third-party software packages used as components in the product.

Package: µGUI - Generic GUI module

Copyright (C) 2015 Achim Döbler

This is a free software that is open for education, research and commercial developments under license policy of following terms. The µGUI module is a free software and there is NO WARRANTY. No restriction on use.

URL: <http://www.embeddedlightning.com/>

Package: Zephyr OS

Copyright (C) Zephyr Project

The above is/are subject to the license terms reprinted below:

Apache License

Version 2.0, January 2004

<http://www.apache.org/licenses/>

TERMS AND CONDITIONS FOR USE, REPRODUCTION, AND DISTRIBUTION

1. Definitions.

"License" shall mean the terms and conditions for use, reproduction, and distribution as defined by Sections 1 through 9 of this document.

"Licensor" shall mean the copyright owner or entity authorized by the copyright owner that is granting the License.

"Legal Entity" shall mean the union of the acting entity and all other entities that control, are controlled by, or are under common control with that entity. For the purposes of this definition, "control" means (i) the power, direct or indirect, to cause the direction or management of such

entity, whether by contract or otherwise, or (ii) ownership of fifty percent (50%) or more of the outstanding shares, or (iii) beneficial ownership of such entity.

"You" (or "Your") shall mean an individual or Legal Entity exercising permissions granted by this License.

"Source" form shall mean the preferred form for making modifications, including but not limited to software source code, documentation source, and configuration files.

"Object" form shall mean any form resulting from mechanical transformation or translation of a Source form, including but not limited to compiled object code, generated documentation, and conversions to other media types.

"Work" shall mean the work of authorship, whether in Source or Object form, made available under the License, as indicated by a copyright notice that is included in or attached to the work (an example is provided in the Appendix below).

"Derivative Works" shall mean any work, whether in Source or Object form, that is based on (or derived from) the Work and for which the editorial revisions, annotations, elaborations, or other modifications represent, as a whole, an original work of authorship. For the purposes of this License, Derivative Works shall not include works that remain separable from, or merely link (or bind by name) to the interfaces of, the Work and Derivative Works thereof.

"Contribution" shall mean any work of authorship, including the original version of the Work and any modifications or additions to that Work or Derivative Works thereof, that is intentionally submitted to Licensor for inclusion in the Work by the copyright owner or by an individual or Legal Entity authorized to submit on behalf of the copyright owner. For the purposes of this definition, "submitted" means any form of electronic, verbal, or written communication sent to the Licensor or its representatives, including but not limited to communication on electronic mailing lists, source code control systems, and issue

tracking systems that are managed by, or on behalf of, the Licensor for the purpose of discussing and improving the Work, but excluding communication that is conspicuously marked or otherwise designated in writing by the copyright owner as "Not a Contribution."

"Contributor" shall mean Licensor and any individual or Legal Entity on behalf of whom a Contribution has been received by Licensor and subsequently incorporated within the Work.

2. Grant of Copyright License. Subject to the terms and conditions of this License, each Contributor hereby grants to You a perpetual, worldwide, non-exclusive, no-charge, royalty-free, irrevocable copyright license to reproduce, prepare Derivative Works of, publicly display, publicly perform, sublicense, and distribute the Work and such Derivative Works in Source or Object form.
3. Grant of Patent License. Subject to the terms and conditions of this License, each Contributor hereby grants to You a perpetual, worldwide, non-exclusive, no-charge, royalty-free, irrevocable (except as stated in this section) patent license to make, have made, use, offer to sell, sell, import, and otherwise transfer the Work, where such license applies only to those patent claims licensable by such Contributor that are necessarily infringed by their Contribution(s) alone or by combination of their Contribution(s) with the Work to which such Contribution(s) was submitted. If You institute patent litigation against any entity (including a cross-claim or counterclaim in a lawsuit) alleging that the Work or a Contribution incorporated within the Work constitutes direct or contributory patent infringement, then any patent licenses granted to You under this License for that Work shall terminate as of the date such litigation is filed.
4. Redistribution. You may reproduce and distribute copies of the Work or Derivative Works thereof in any medium, with or without modifications, and in Source or Object form, provided that You meet the following conditions:

- a. You must give any other recipients of the Work or Derivative Works a copy of this License; and
 - b. You must cause any modified files to carry prominent notices stating that You changed the files; and
 - c. You must retain, in the Source form of any Derivative Works that You distribute, all copyright, patent, trademark, and attribution notices from the Source form of the Work, excluding those notices that do not pertain to any part of the Derivative Works; and
 - d. If the Work includes a "NOTICE" text file as part of its distribution, then any Derivative Works that You distribute must include a readable copy of the attribution notices contained within such NOTICE file, excluding those notices that do not pertain to any part of the Derivative Works, in at least one of the following places: within a NOTICE text file distributed as part of the Derivative Works; within the Source form or documentation, if provided along with the Derivative Works; or, within a display generated by the Derivative Works, if and wherever such third-party notices normally appear. The contents of the NOTICE file are for informational purposes only and do not modify the License. You may add Your own attribution notices within Derivative Works that You distribute, alongside or as an addendum to the NOTICE text from the Work, provided that such additional attribution notices cannot be construed as modifying the License. You may add Your own copyright statement to Your modifications and may provide additional or different license terms and conditions for use, reproduction, or distribution of Your modifications, or for any such Derivative Works as a whole, provided Your use, reproduction, and distribution of the Work otherwise complies with the conditions stated in this License.
5. Submission of Contributions. Unless You explicitly state otherwise, any Contribution intentionally submitted for inclusion in the Work by You to the Licensor shall be under the terms and conditions of this License, without any additional terms or conditions. Notwithstanding the above,

nothing herein shall supersede or modify the terms of any separate license agreement you may have executed with Licensor regarding such Contributions.

6. Trademarks. This License does not grant permission to use the trade names, trademarks, service marks, or product names of the Licensor, except as required for reasonable and customary use in describing the origin of the Work and reproducing the content of the NOTICE file.
7. Disclaimer of Warranty. Unless required by applicable law or agreed to in writing, Licensor provides the Work (and each Contributor provides its Contributions) on an "AS IS" BASIS, WITHOUT WARRANTIES OR CONDITIONS OF ANY KIND, either express or implied, including, without limitation, any warranties or conditions of TITLE, NON-INFRINGEMENT, MERCHANTABILITY, or FITNESS FOR A PARTICULAR PURPOSE. You are solely responsible for determining the appropriateness of using or redistributing the Work and assume any risks associated with Your exercise of permissions under this License.
8. Limitation of Liability. In no event and under no legal theory, whether in tort (including negligence), contract, or otherwise, unless required by applicable law (such as deliberate and grossly negligent acts) or agreed to in writing, shall any Contributor be liable to You for damages, including any direct, indirect, special, incidental, or consequential damages of any character arising as a result of this License or out of the use or inability to use the Work (including but not limited to damages for loss of goodwill, work stoppage, computer failure or malfunction, or any and all other commercial damages or losses), even if such Contributor has been advised of the possibility of such damages.
9. Accepting Warranty or Additional Liability. While redistributing the Work or Derivative Works thereof, You may choose to offer, and charge a fee for, acceptance of support, warranty, indemnity, or other liability obligations and/or rights consistent with this License. However, in accepting such obligations, You may act only on Your own

behalf and on Your sole responsibility, not on behalf of any other Contributor, and only if You agree to indemnify, defend, and hold each Contributor harmless for any liability incurred by, or claims asserted against, such Contributor by reason of your accepting any such warranty or additional liability.

Unless required by applicable law or agreed to in writing, software distributed under the License is distributed on an "AS IS" BASIS, WITHOUT WARRANTIES OR CONDITIONS OF ANY KIND, either express or implied. See the License for the specific language governing permissions and limitations under the License.



893046-0020

©2024 Bose Corporation, 100 The Mountain Road, Framingham, MA 01701-9168 USA
AM893046-0020 Rev. 00